



# BEST DISEASE

or vitelliform macular dystrophy (VMD), type 2

# WHAT IS VMD?

Vitelliform macular dystrophy is a disease in which lipofuscin builds up in the macula.

There are two types of the disorder: adult and juvenile.

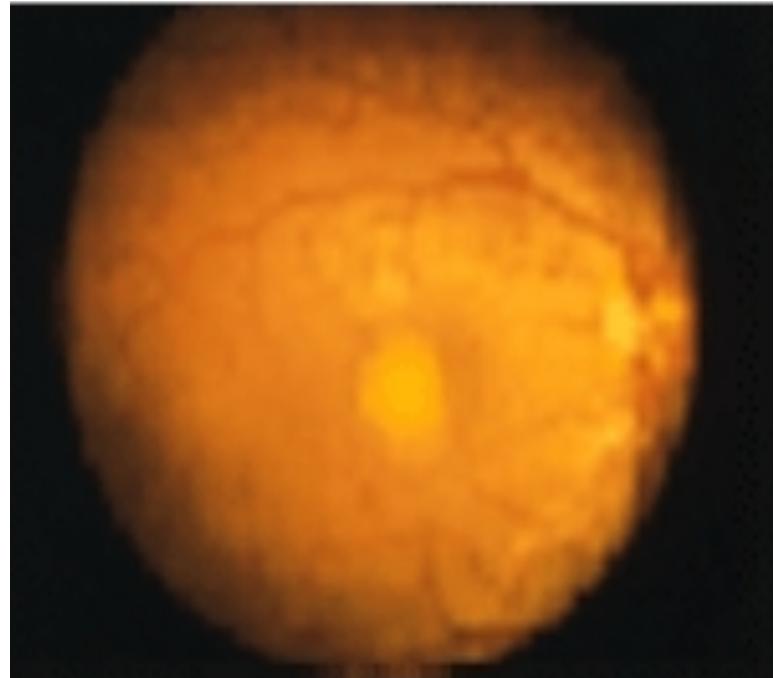


Photo from <http://www.ncbi.nlm.nih.gov/books/NBK22187/>



# WHAT IS BEST DISEASE?



Photo from

<http://emedicine.medscape.com/article/1227128-overview#a0104>

Best disease is the juvenile (early-onset) form of VMD, named for the scientist who first studied it.

The adult form is less understood.



## DIAGNOSIS

Vision loss from Best disease is progressive.

Lipofuscin deposits visible during a standard eye exam.



*Photo from*

<http://emedicine.medscape.com/article/1227128-overview#a0104>



# TREATMENT



Photo from  
<http://emedicine.medscape.com/article/1227128-overview#a0104>

There is no treatment for  
Best disease itself.

Some symptoms of the  
disease can be treated  
via laser or injection.



# THE GENE

The gene responsible is known as BEST1, located on chromosome 11.



Photo from  
[http://www.ncbi.nlm.nih.gov/  
mapview/map\\_search.cgi?  
chr=hum\\_chr.inf&query=VMD2](http://www.ncbi.nlm.nih.gov/mapview/map_search.cgi?chr=hum_chr.inf&query=VMD2)

11

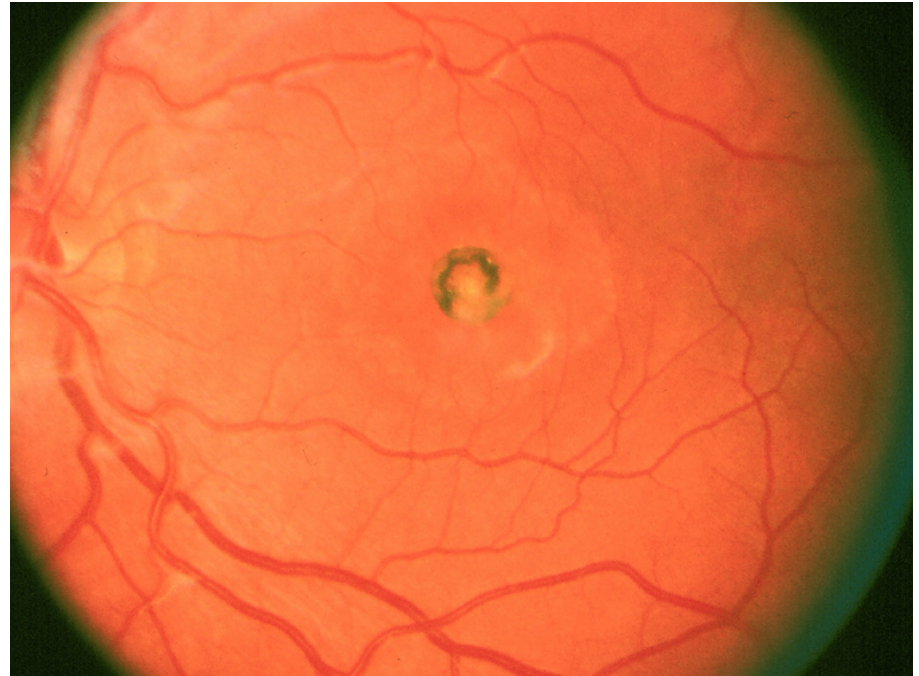


Photo from  
[http://emedicine.medscape.com/article/1227128-  
overview#a0104](http://emedicine.medscape.com/article/1227128-overview#a0104)



## SOURCES

- <http://www.ncbi.nlm.nih.gov/books/NBK22187/>
- [http://www.ncbi.nlm.nih.gov/mapview/  
map\\_search.cgi?chr=hum\\_chr.inf&query=VMD2](http://www.ncbi.nlm.nih.gov/mapview/map_search.cgi?chr=hum_chr.inf&query=VMD2)
- [http://ghr.nlm.nih.gov/condition/vitelliform-macular-  
dystrophy](http://ghr.nlm.nih.gov/condition/vitelliform-macular-dystrophy)
- <http://omim.org/entry/153700>
- [http://emedicine.medscape.com/article/1227128-  
overview](http://emedicine.medscape.com/article/1227128-overview)